



COMPANY PROFILE 2021

www.dnf.co.id/amina

TABLE OF CONTENTS

About Us	2
Vision Mision Values	3
Structure	4
Alliance	8



ABOUT US

AMINA Research and Business Consulting is a group that includes research and development efforts conducted as regularly and systematically. Amina had PKP with NPWP 41.607.473.0.012.000 and number of AHU-0013987.AH.01.01 year 2021.

AMINA engage in community related to the social sciences, such as research and development of economics, sociology, anthropology, politics, law, government, education, trade, communication, customs, and others.



VISION

To become a reference center for research analysis and asset management in the field of social science research and development



MISION

Build synergies with the government, stakeholders, and educational institutions in social science research and development

Efficient optimization of company capacity and strengthening of the company's strategic position

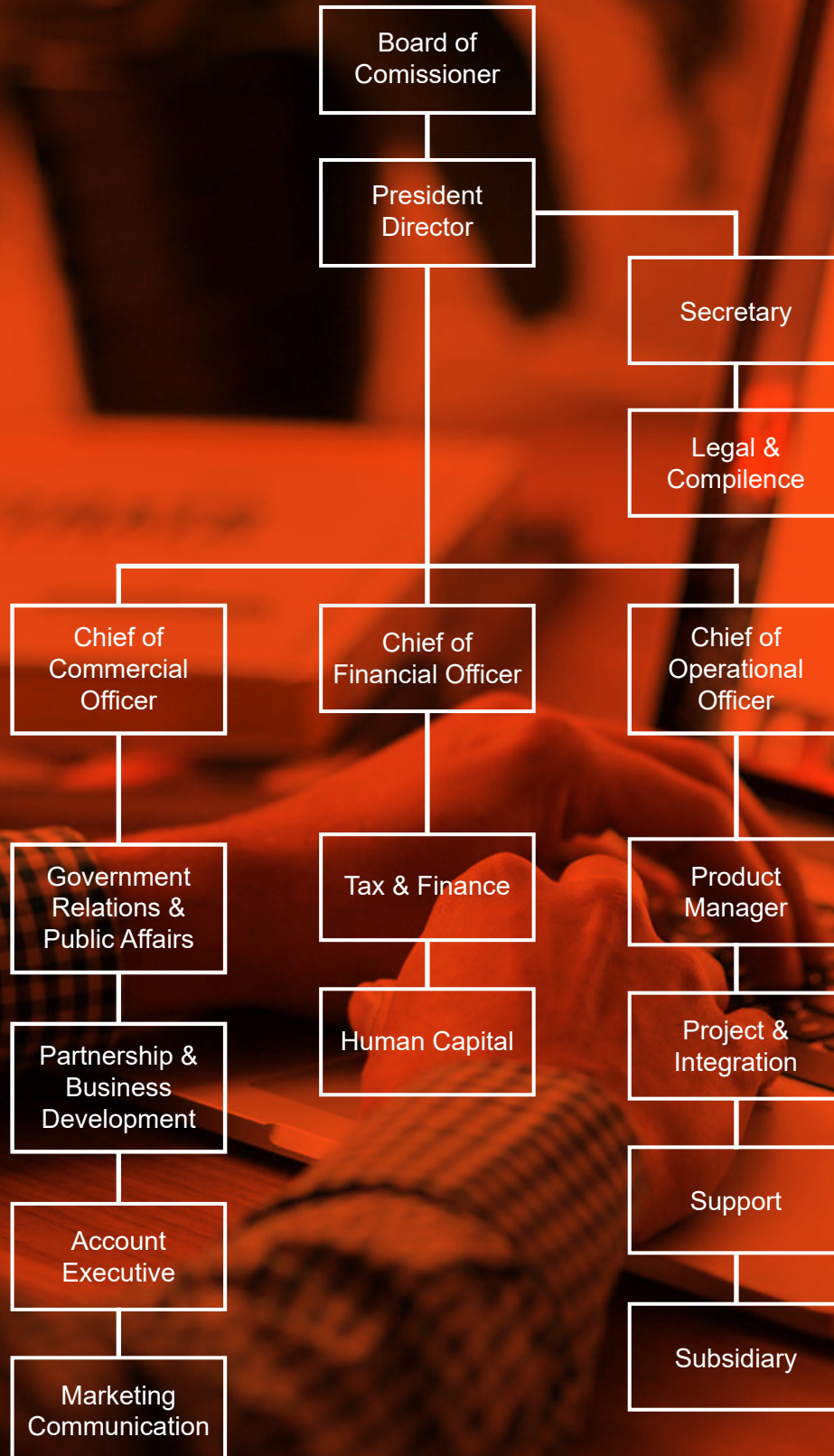
Harmonization of the company's output quality and impact for strategic partners and communities



VALUES

Excels with Integrity

STRUCTURE





Asnawi **Comissioner**

Education

2004 Master of Accounting, Universitas Persada Indonesia YAI

1986 Bachelor of Management, Universitas Prof. Dr. Moestopo Beragama

Experiences

1975 - 2005 Departemen Sosial RI

1983 - 1985 Manager of Universitas IProf. Dr. Moestopo Beragama Football Club

1983 - 1984 Chairman of the Student Correctional Agency, Faculty of Economy,
Universitas Prof. Dr. Moestopo Beragama



Dr. Dina Nurul Fitria, S.E., M.T., CSCA., CRP.

President Director

Education

2018 Doctor of Economics, Institut Pertanian Bogor
2003 Master of Engineering, Institut Teknologi Bandung
1997 Bachelor of Economics, Universitas Negeri Sebelas Maret

Experiences

2000 - Present CEO of PT. Dinamika Nurraya Fajar
2007 - 2021 Independent Think Tank & Professional Writer
2018 - 2021 Lecturer of Department of Economics, Universitas Pertamina
2007 - 2018 Lecturer of Department of Engineering, Universitas Al-Azhar
2012 - 2015 Senior Specialist in Economic Development RI
2010 - 2011 Specialized Staff in Socio-Economy-Culture of Innovation
for Komite Inovasi Nasional
2005 - 2007 Social Researcher of PT. PP London Sumatera Indonesia Tbk.

Research Project

2018 Strategic Plan for Crude Palm Oil Industry: EU Import Ban on CPO Biofuel
Implication
2017 Kajian “Sinergitas Koperasi dan BUMDes”
2017 Kajian “Aspirasi Masyarakat dan Daerah tentang Program Prioritas
Pembangunan Daerah dan Wilayah Barat



Michael Suhandinata

Chief Financial Officer



michaels@dnf.co.id
msuhandinata@gmail.com

Education

2016 Brevet A B, PT. Edu Cipta

2011 Bachelor of Accounting, STIE Santa Ursula

Experiences

2020 - Present Accounting & Business Teacher, Santa Laurensia School

2020 - 2020 Part Time Accounting & Business Studies Teacher, Sekolah Lentera Indonesia

2019 - 2020 Part Time Subject Teacher of Thames-NCC Jakarta for Sekolah Lentera Indonesia

2019 - 2020 Part Time Tax Accounting of PT. Espeka Binaindusindo

2011 - 2019 Part Time Instructor of PT. Damier (Binus Center Bintaro)

2017 - 2018 Part Time Tax Accounting of PT. Jakresta Profit Solusi

2016 - 2017 Part Time Tax Accounting - Tax of Forex Wax, LLC

2015 - 2016 Part Time Accounting - Tax of PT. Cipta Teduh Sejahtera (Fish Eye Production)

2013 - 2015 Accounting Senior Staff of PT. Cyberindo Aditama (CBN-Salim Group)

2012 - 2013 Corporate Relationship Manager of PT. Sentral Mitra Informatika

2010 - 2012 Finance Senior Staff of PT. Serba Mulia Auto

ALLIANCE

AMINA Research & Business Consulting is a subsidiary of **PT. Dinamika Nurraya Fajar** with products to our clients area feasibility study as part of sustainability advisory of corporate growth. Consulting area from **PT. Dinamika Nurraya Fajar** is Architectural, Research, and Renewable Energy & Agriculture.

STRATEGIC PARTNERS

We committed to collaborate with our stakeholders to ensure sustainability of education, energy, agribusiness, maritime, and supply chain.





Visit Us



dinanf@dnf.co.id
ptdinamikanurrayafajar@gmail.com



www.dnf.co.id/amina



One Pacific Place Level 11
Jl. Jenderal Sudirman Kav. 52,
Jakarta Selatan, Jakarta, 121